



SPECIALISTS FOR AM BROADCASTING

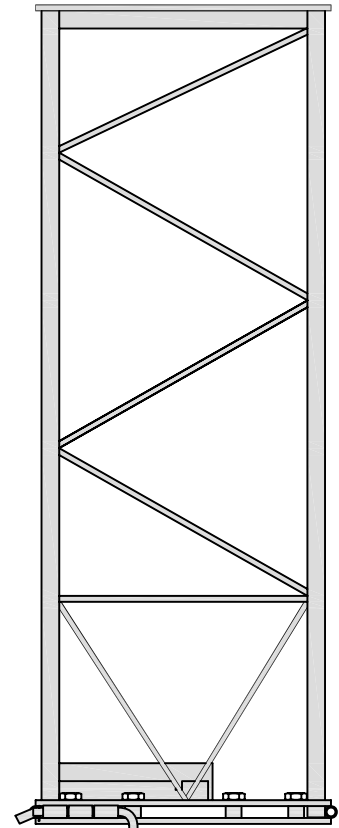
VTGS-20BH-AM Steel Tower

THE VTGS-20BH-AM SERIES OF STEEL TOWERS PROVIDES A VERY CONVENIENT METHOD OF INSTALLING AND ERECTING VALCOM'S AM SERIES ANTENNAS. THEY ARE INTENDED FOR USE WITH THE VGP-17AM GIN POLE WHICH IS AVAILABLE SEPARATELY.

IN ADDITION, THE TOWER CAN BE USED TO ACHIEVE GROUND CLEARANCE TO AVOID SNOW BUILD UP AS WELL AS TO PROVIDE A MEANS OF MOUNTING AUXILIARY EQUIPMENT.

FEATURES:

- RUGGED GALVANIZED STEEL CONSTRUCTION
- HINGED BASE SECURES WITH LOCKING PINS AND BOLTS
- INTEGRAL LADDER ON GIN POLE SIDE
- ACCEPTS VGP-17AM GIN POLE
- AVAILABLE UP TO 5 FEET HIGH IN 1 FOOT INCREMENTS



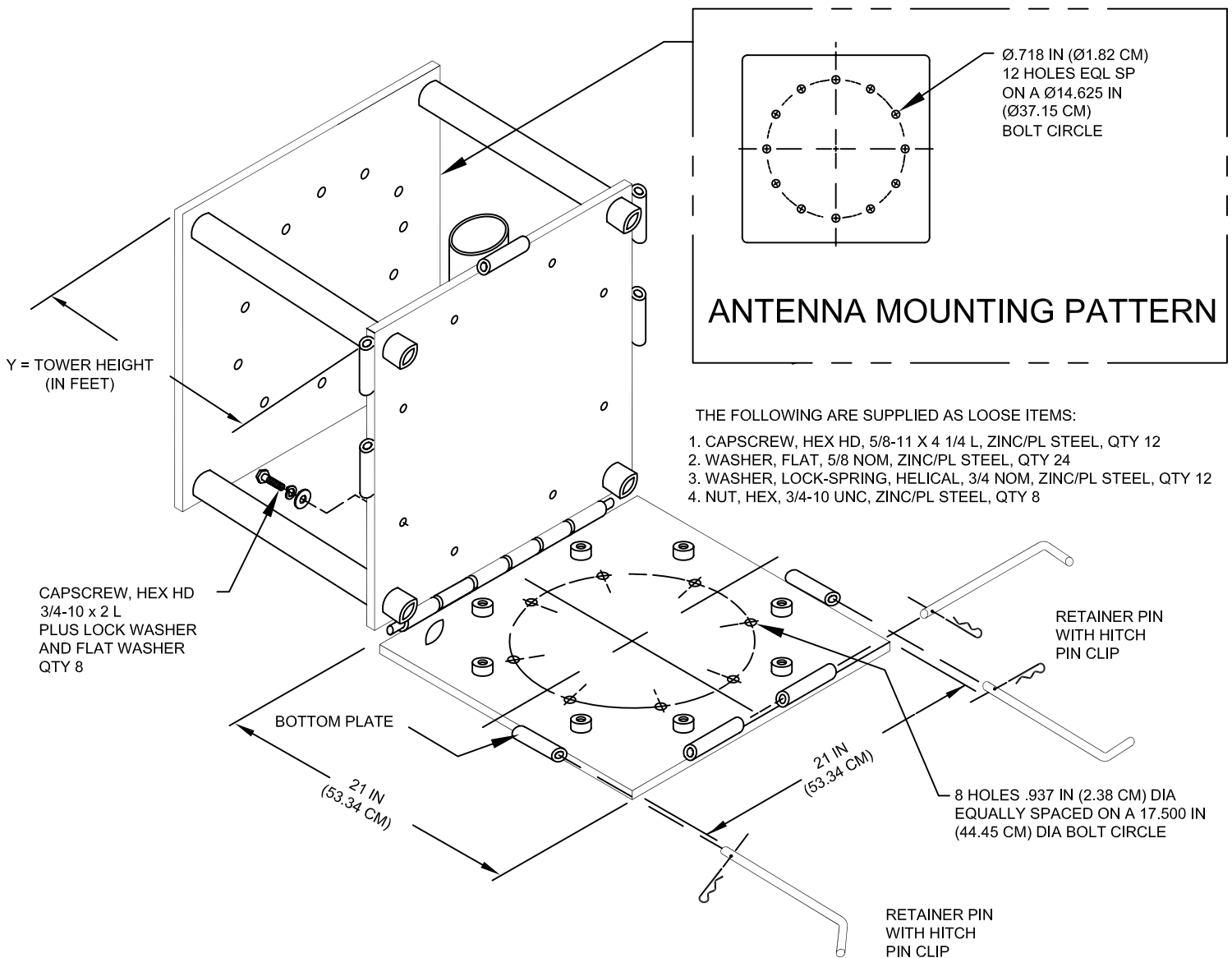
VTGS-20BH-AM STEEL TOWER QUICK REFERENCE DATA

VTGS-20BH-AM IS THE STANDARD MODEL NUMBER FOR VALCOM'S HEAVY DUTY AM STEEL HINGED TOWER.

SUBSTITUTE "Y" IN THE MODEL NUMBER FOR THE HEIGHT OF THE TOWER REQUIRED. THE TOWER IS AVAILABLE IN 1 FOOT INCREMENTS, UP TO AND INCLUDING 5 FEET.

UNLESS OTHERWISE SPECIFIED, THE STANDARD NOMINAL HEIGHT IS 5 FEET (1.52 M)

VT	GS	- 20	BH	AM	- Y
VALCOM TOWER	GALVANIZED STEEL	EACH SIDE LENGTH	BOTTOM HINGED	ANTENNA TYPE	TOWER HEIGHT IN FEET



P.O. BOX 603 GUELPH, ONTARIO, CANADA, N1H 6L3
TEL 519-824-3220 FAX 519-824-3411

INTERNET: www.valcom-guelph.com EMAIL: enquiries@valcom-guelph.com