

World's Leading Manufacturer Of Fibreglass Whip Antennas



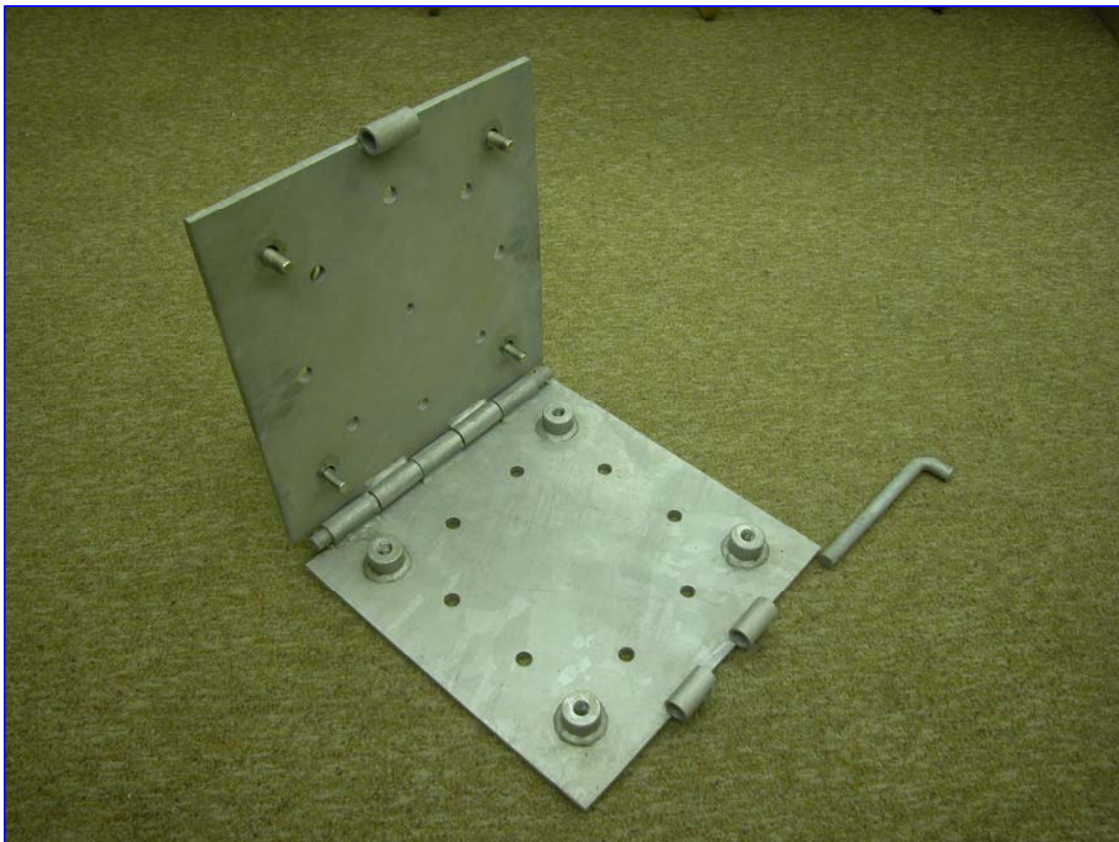
SPECIALISTS FOR HIGH FREQUENCY

---

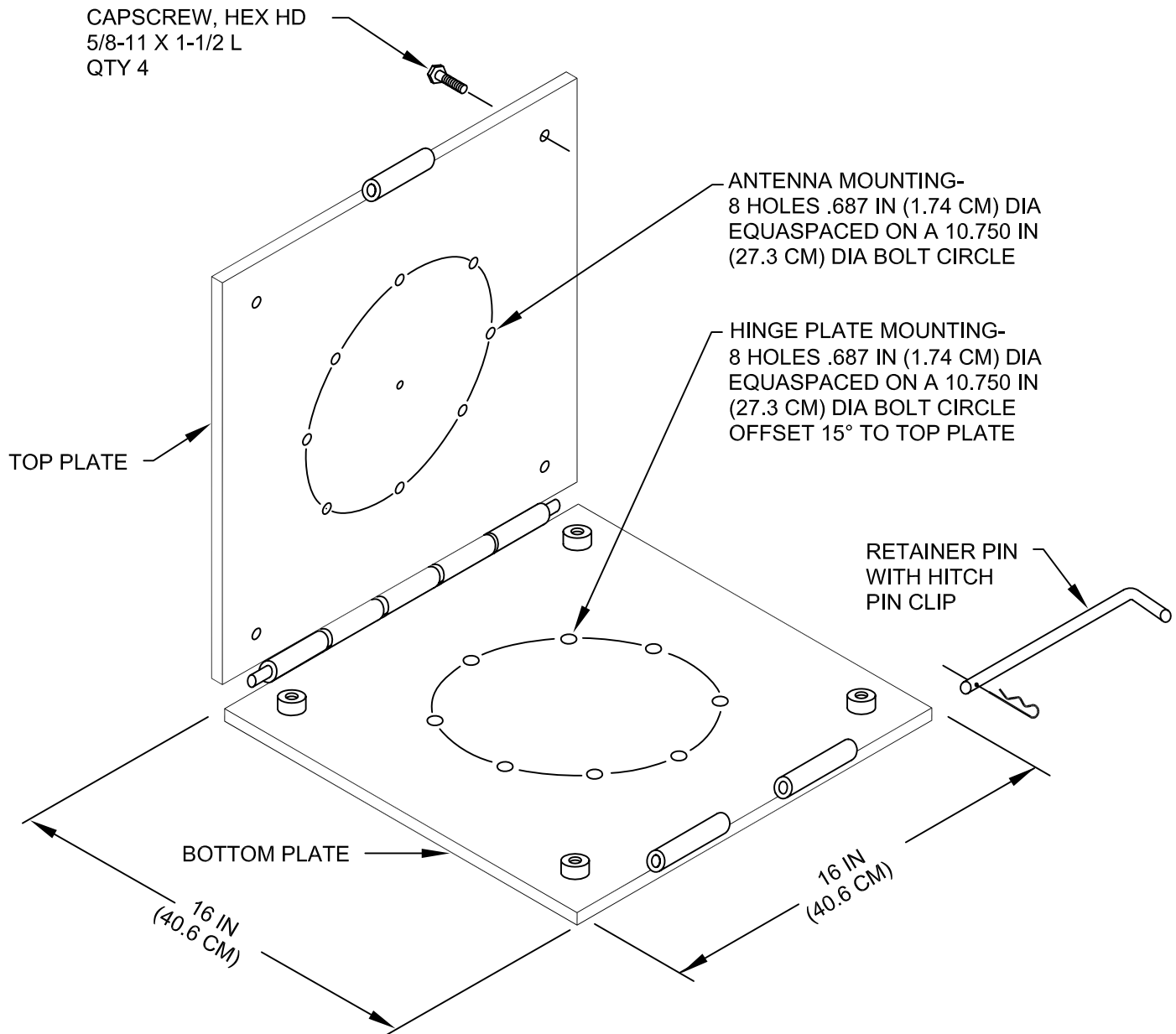
## **VHB-13 Hinge Plate**

---

THE VHB-13 HINGE PLATE IS CONSTRUCTED OF 3/8 THICK GALVANIZED STEEL AND IS USED TO FACILITATE IN THE ERECTION AND DISMANTLING OF VALCOM'S V132 AND V147 SERIES SIDE FEED ANTENNAS AND ALSO THE AS-2537C/SR ANTENNA.



# VHB-13 HINGE PLATE QUICK REFERENCE DATA



THE FOLLOWING ARE SUPPLIED AS LOOSE ITEMS:

1. CAPSCREW, HEX HD, 5/8-11 X 4 L, ZINC/PL STEEL, QTY 8
2. FLATWASHER, 5/8 NOM, ZINC/PL STEEL, QTY 16
3. WASHER, LOCK-SPRING, HELICAL, 5/8 NOM, ZINC/PL STEEL, QTY 8
4. NUT, HEX, 5/8-11, ZINC/PL STEEL, QTY 8

