

World's Leading Manufacturer of Fibreglass Whip Antennas

65-Foot Whip Antenna V-33065 and V-33065 FT

TYPICAL APPLICATIONS

Broadcasting
Ground to air
Civil defense
Shore to ship

Valcom's Model V-33065 is a rugged, high reliability antenna designed for operation in areas of environmental extremes. This whip antenna is a member of the V-330 Series of antennas designed to meet the growing demand for a mechanically strong and electrically sound antenna that can perform in all situations.

Mechanical strength is achieved with a patented process using high strength filament wound fibreglass. Electrical stability is obtained by employing multiple braided copper conductors in the construction of the antenna. To assure long life the antenna is finished with epoxy polyamide paint which protects it from the sun's rays while offering good abrasion resistance.

The V-33065 is available in two standard configurations to meet various system and installation requirements. The standard antenna is provided with a feed point located 45 cm (18 in) above the base. To facilitate occasional inspection and to simplify erection, the VHB-17 heavy duty galvanized steel hinged plate is optionally available for the standard antenna. Where a base feed-through insulator is desired, order Model V-33065 FT.

A copper ground screen with a 100-foot radius, Model VGS-36-100, is available to improve the antenna ground system efficiency.

FEATURES

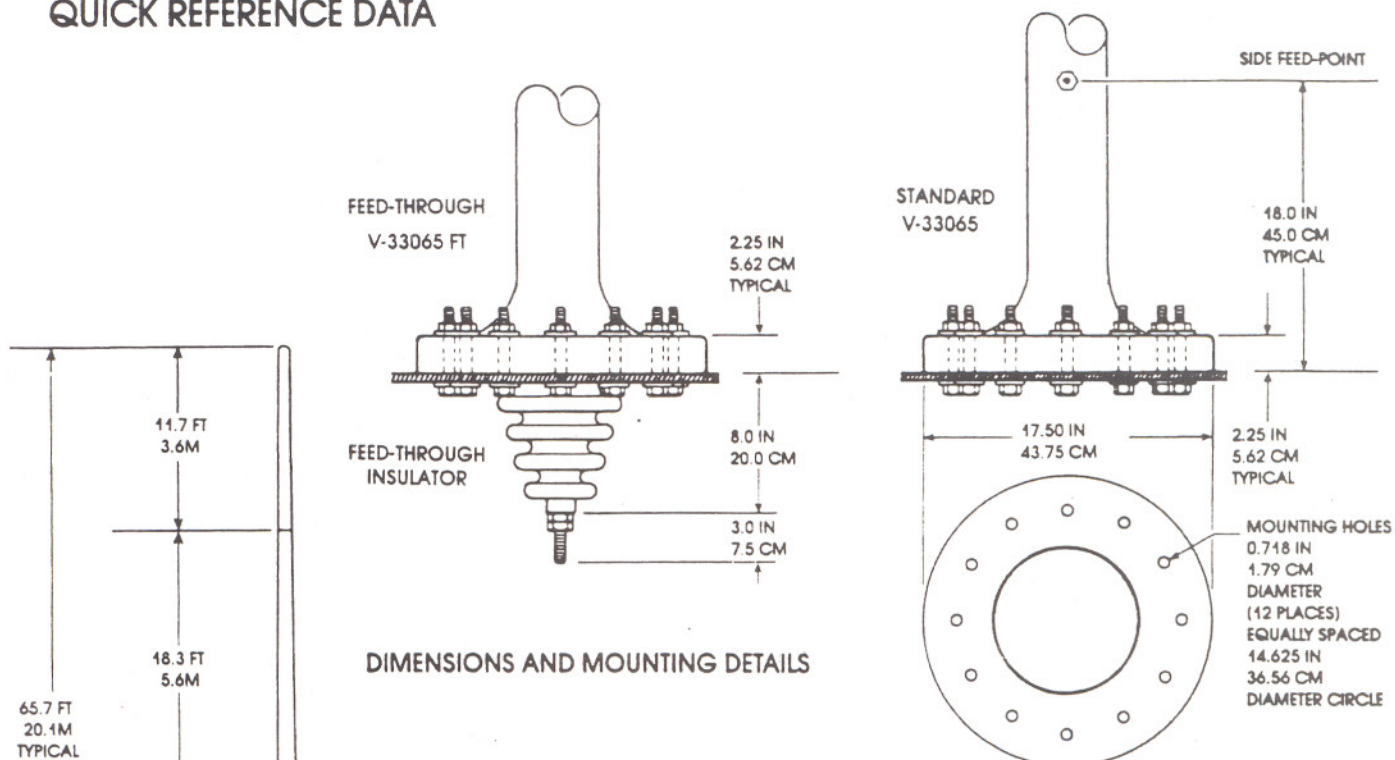
- High reliability
- Easy erection
- Excellent electrical stability
- Low maintenance costs
- Low cost installation



SPECIALISTS IN RELIABLE COMMUNICATIONS



QUICK REFERENCE DATA



V-33065

V-33065 FT

ELECTRICAL CHARACTERISTICS

Frequency Range	500 kHz to 30 MHz — with tuner	
Resonant Frequency	3.34 MHz	3.22 MHz
Power Rating	5 KW Average, 10 KW PEP	
Dry Withstanding Voltage	25 KV	
Electrical Length	19.5 M (64.1 FT)	20.3 M (67.1 FT)

MECHANICAL CHARACTERISTICS

Mechanical Length	20.1 M (65.7 FT)	20.2 M (66.6 FT)
Base Insulator	Epoxy Fibreglass	
Top Termination	Brass Corona Ball	
Joints	Bronze Threaded Section With Lock Pin	
Wind Loading Test	To 240 Km/Hr (150 MPH)	
Ice Loading Test	1.87 CM (75 inch) Ice at 160 Km/Hr (100 MPH)	
Abrasion Resistance	Good	
Center of Gravity	6.1 M (20.0 FT)	6.2 M (20.4 FT)
Temperature	-50°C to +65°C (-60°F to 150°F)	
Finish	Epoxy Polyamide Paint	
Weight	115 Kg (253 pounds)	118 Kg (259 pounds)

United States Patent Number 3,725,944 Applies

Specifications subject to change without notice



P.O. BOX 603 GUELPH, ONTARIO, CANADA, N1H 6L3

TEL 519-824-3220 FAX 519-824-3411

INTERNET: www.valcom-guelph.com EMAIL: enquiries@valcom-guelph.com