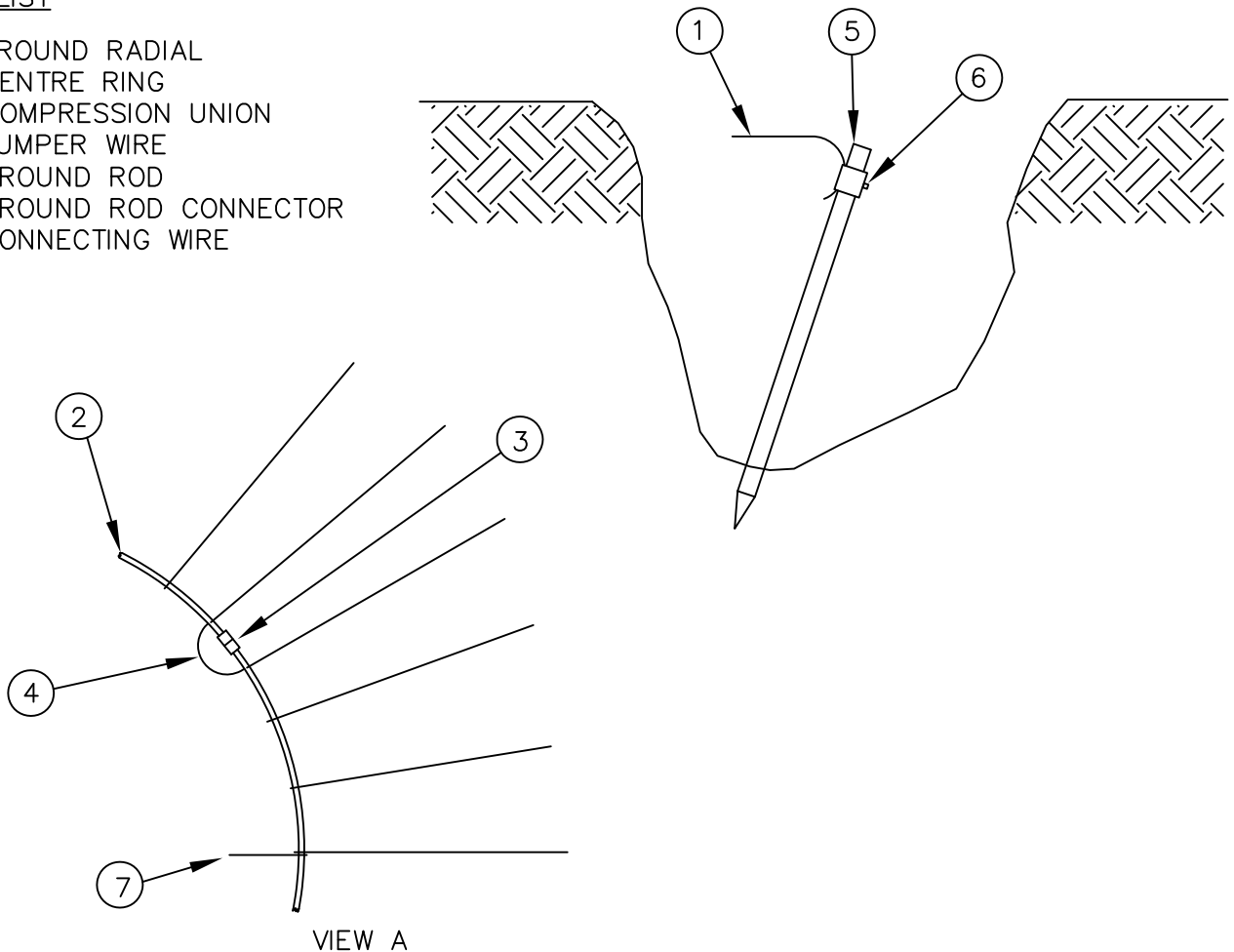


VGS-36100 GROUND SCREEN INSTALLATION INSTRUCTIONS

PARTS LIST

1. GROUND RADIAL
2. CENTRE RING
3. COMPRESSION UNION
4. JUMPER WIRE
5. GROUND ROD
6. GROUND ROD CONNECTOR
7. CONNECTING WIRE



ASSEMBLY AND INSTALLATION INSTRUCTIONS

1. DIG AN 18 INCH DEEP TRENCH CENTRALLY AROUND THE ANTENNA PAD WITH A DIAMETER OF APPROXIMATELY 7 FEET.
2. DIG 4 TRENCHES 18 INCHES DEEP FROM THE CENTRE RING TO THE ANTENNA PAD 90° APART.
3. DIG 36 STRAIGHT TRENCHES 18 INCHES DEEP, 97 FEET LONG RADIALLY FROM THE CENTRE RING. THE RADIALS SHOULD BE EQUALLY SPACED 17FT 6IN APART AT THE OUTER ENDS.
4. FILL ALL THE TRENCHES WITH 6 INCHES OF ROCK FREE SOIL.
5. ENCIRCLE ANTENNA WITH FOUR SECTORS OF THE CENTRE RING. FLEXIBLE TUBING SHOULD BE FORMED SO THAT THE ANTENNA IS APPROXIMATELY AT THE CENTRE OF THE RING.
6. JOIN THE FOUR SECTMENTS OF THE CENTRE RING WITH THE COMPRESSION UNIONS. CONNECT THE 12 INCH JUMPER WIRES ACROSS THE UNIONS AND BRAZE THE FREE END ONTO THE COPPER CENTRE RING TUBING.
7. DEPLOY THE 36 GROUND RADIALS IN THE TRENCHES AND SECURE TO THE GROUND RODS WITH THE GROUND ROD CONNECTORS. USING A SLEDGE HAMMER, DRIVE THE RODS INTO THE GROUND.
8. CUT THE FOUR CONNECTING WIRES TO LENGTH AND TERMINATE AT GROUND STUDS ON TUNER. IF A SUPPORT TOWER IS USED, TERMINATE WIRES TO MOUNTING STUDS ON CONCRETE PAD.
9. COVER THE CONNECTING WIRE, CENTRE RING AND GROUND RADIALS WITH 6 INCHES OF ROCK FREE SOIL. BACKFILL REMAINDER OF TRENCH WITH THE REMOVED SOIL.