

World's Leading Manufacturer Of Fibreglass Whip Antennas



SPECIALISTS FOR HIGH FREQUENCY

35 Ft Broadband HF Antenna VBBA 2-30 MHz

PN: VD-97-00061-1

THE VALCOM MODEL VBBA 2-30 IS A 35 FOOT, BROADBAND HF TACTICAL WHIP ANTENNA INTENDED FOR USE IN HIGH POWER ELECTRONIC COUNTER MEASURE (ECM) SYSTEMS. THE VBBA 2-30 OPERATES IN THE 2 MHz TO 30 MHz RANGE.

THE VBBA 2-30 EXHIBITS A NOMINAL INPUT IMPEDANCE OF 50 OHMS OVER THE HF FREQUENCY BAND OF 2 MHz TO 30 MHz PROVIDING A MAXIMUM VSWR OF 2:1 ALL WITHOUT THE USE OF AN EXTERNAL TUNER. LIGHTNING PROTECTION IS PROVIDED BY A DC STATIC SHORT AT THE INPUT OF THE ANTENNA.

BY USING A COMPATIBLE, THIRD-PARTY MULTI-COUPLER OR POWER COMBINER UNIT, MULTIPLE TRANSMITTERS CAN BE DIRECTLY CONNECTED TO THE VBBA 2-30, PROVIDING THE PEAK POWER RATING IS NOT EXCEEDED AT ANY TIME.

THE VBBA 2-30 IS A SELF-SUPPORTING WHIP ANTENNA CONSISTING OF AN ALUMINUM RADIATING ELEMENT AND AN INTEGRAL FIBREGLASS MOUNTING BASE AND INSULATOR. THE MOUNTING BASE UTILIZES THE SAME MOUNTING PATTERN THAT IS CURRENTLY USED BY THE AS-3772B/U TUNABLE HF SHIPBOARD ANTENNA.

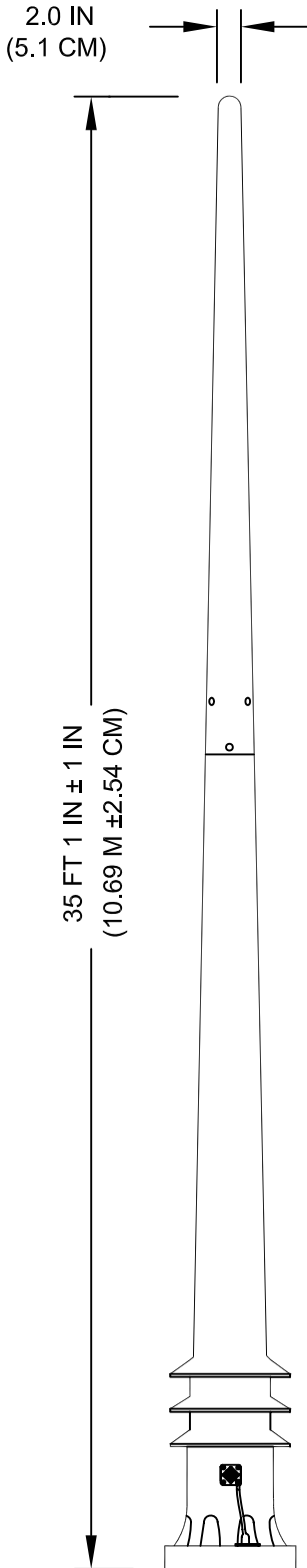
FEATURES:

- MINIMUM MAINTENANCE
- HIGH RELIABILITY
- SHIPBOARD APPLICATIONS
- BROADBAND
- WEATHERPROOF

U.S. PATENTS: 5357261, 7242367 & 7555827



QUICK REFERENCE DATA VBBA2-30



ELECTRICAL CHARACTERISTICS

| | |
|------------------|-------------------------|
| FREQUENCY RANGE | 2-30 MHz |
| POLARIZATION | VERTICAL |
| POWER RATING | 3KW CW, 5KW PEP |
| AZIMUTH COVERAGE | OMNIDIRECTIONAL ±3 dB |
| VSWR | LESS THAN 2.0:1 |
| INPUT CONNECTION | 7/8 EIA FLANGE (NOTE 2) |

MECHANICAL CHARACTERISTICS

| | |
|-------------------------|--|
| ANTENNA OVERALL LENGTH | 35 FT 1 IN ± 1 IN (10.69 M ± 2.54 CM) |
| ANTENNA WEIGHT | 250 LBS (118 KG) |
| RADIATING ELEMENT | ALUMINUM |
| INTEGRAL BASE/INSULATOR | EPOXY FIBREGLASS |
| FINISH | HAZE GRAY SILICONE ALKYD ENAMEL PER TT-E-490, COLOUR 26270 PER FED-STD-595 |

ENVIRONMENTAL CHARACTERISTICS

| | |
|-------------------|--------------------------------|
| TEMPERATURE | -50°C TO 65°C (-60°F TO 150°F) |
| RELATIVE HUMIDITY | 0-100% |
| VIBRATION | MIL-STD-167-1 TYPE 1 |
| WIND VELOCITY | 140 MPH (224 KPH) |
| ICE LOADING | 4.5 LBS/SQ FT (22 KG/SQ M) |
| SHOCK | MIL-S-901 GRADE A |

NOTES:

- DO NOT USE LEAD BASE PAINT TO TOUCH-UP OR REPAINT ANTENNA.
- CONTACT FACTORY FOR OTHER AVAILABLE OPTIONS.

