



SPECIALISTS FOR HIGH FREQUENCY

---

# 36 Foot Whip Antenna V-425 Series

---

THE V-425 IS A HEAVY DUTY 36 FOOT ANTENNA EMPLOYING ROBUST CONSTRUCTION AND AN ENLARGED BASE FOR USE IN PARTICULARLY HARSH ENVIRONMENTS. THE ANTENNA IS INTENDED FOR SHIPBOARD AND OTHER MARINE APPLICATIONS, ALTHOUGH IT IS ALSO WELL-SUITED FOR MANY LAND-BASED INSTALLATIONS. THE V-425FT IS THE COMMERCIAL VERSION OF THE AS-5085/SR ANTENNA IN USE BY THE CANADIAN NAVY.

IT IS CONSTRUCTED OF TWO TAPERED SECTIONS WHICH THREAD TOGETHER. THE LOWER SECTION HAS AN INTEGRAL BASE MOUNTING FLANGE MADE OF THE SAME HIGH STRENGTH FILAMENT FIBREGLASS USED IN THE ANTENNA. FOR FREQUENCIES BELOW STANDARD HF, THE BASE SECTION CAN BE MADE WITH AN INTEGRAL LOADING COIL. THE LOADING COIL ALLOWS OPERATION DOWN TO LF FREQUENCIES.

THE V-425 IS AVAILABLE IN TWO STANDARD CONFIGURATIONS TO MEET VARIOUS SYSTEM AND INSTALLATION REQUIREMENTS. THE STANDARD MODEL IS PROVIDED WITH AN ABOVE-THE-BASE FEED POINT AND THE OPTIONAL CONFIGURATION IS WITH A BASE FEED-THROUGH INSULATOR. THE INSULATOR IS THE SAME AS THAT EMPLOYED ON VALCOM'S NATO ANTENNAS.

**FEATURES:**

- EXTRA HEAVY DUTY
- IDEAL FOR HARSH ENVIRONMENTS
- HIGH RELIABILITY
- MATCHES A WIDE RANGE OF COMMUNICATION SYSTEMS



# V-425 SERIES QUICK REFERENCE DATA

V-425	V-425FT	V-425CL
-------	---------	---------

## ELECTRICAL CHARACTERISTICS

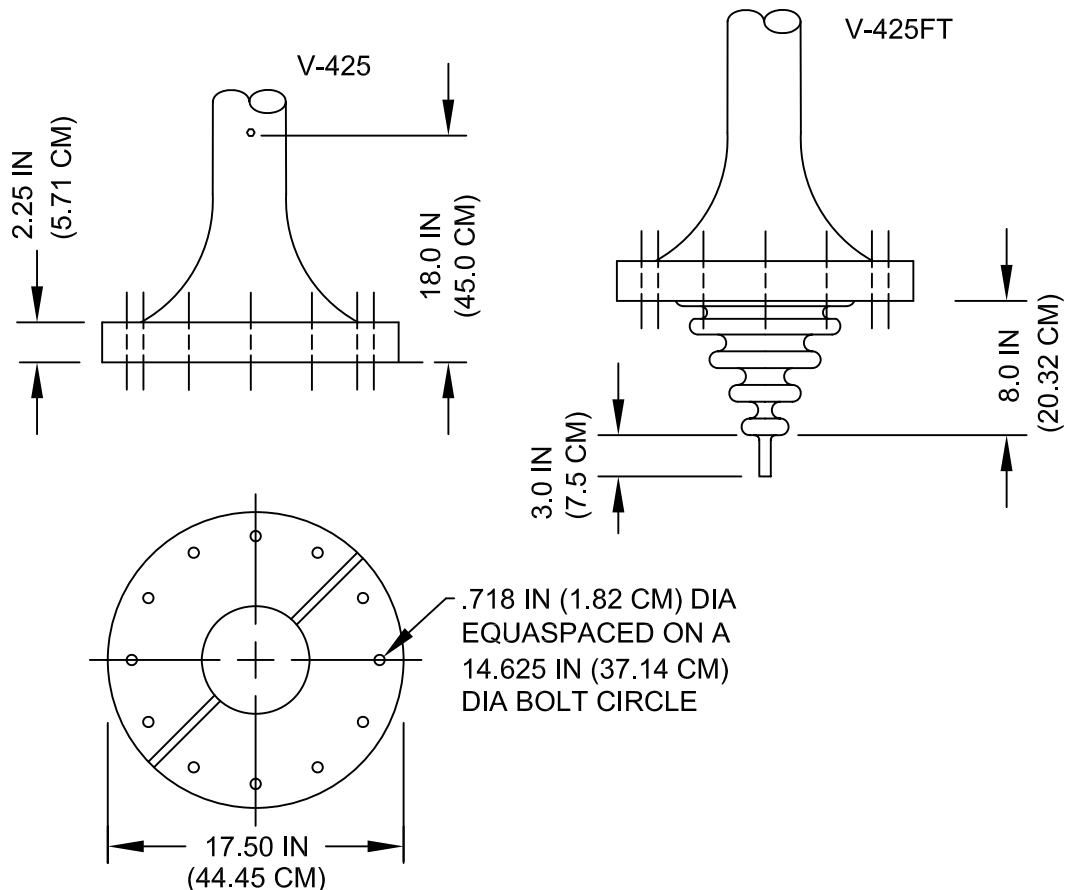
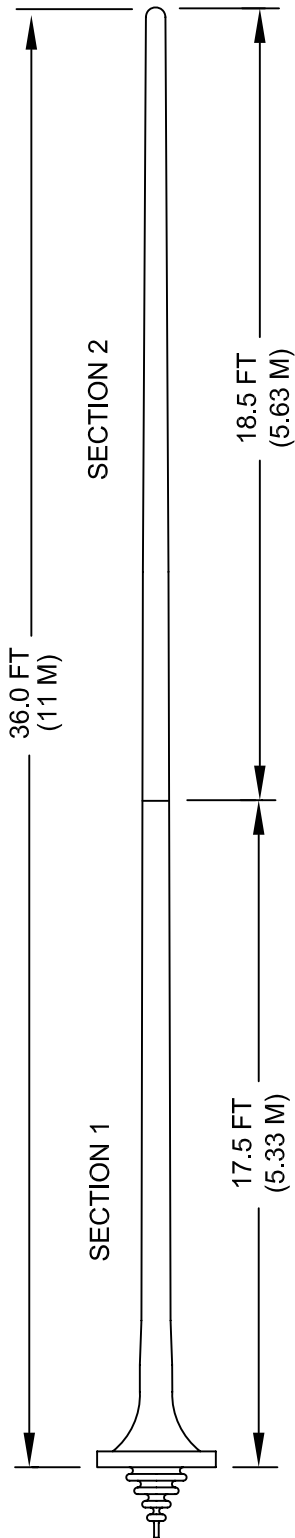
FREQUENCY RANGE	1.6 TO 30 MHz	1.6 TO 30 MHz	0.28 TO 1.6 MHz
RESONANT FREQUENCY	6.1 MHz	5.9 MHz	0.1 TO 2.0 MHz
POWER RATING	5 KW AVERAGE POWER		1 KW MAX
DRY WITHSTANDING VOLTAGE	25 KV		
ELECTRICAL LENGTH	34.5 FT (10.5 M)	36.9 FT (11.2 M)	DEPENDS ON Fo

## MECHANICAL CHARACTERISTICS

MECHANICAL LENGTH	36.0 FT (11.0 M)	36.9 FT (11.2 M)	36.0 FT (11.0 M)
BASE INSULATOR	FILAMENT WOUND EPOXY/FIBREGLASS		
TOP TERMINATION	BRASS CORONA BALL		
JOINTS	BRONZE FERRULE C/W LOCKING SCREW		
WIND LOADING TEST	150 MPH (241 KPH)		
ICE LOADING TEST	.75 IN (1.90 CM) AT 100 MPH (161 KPH)		
TEMPERATURE	-60°F TO 150°F (-50°C TO 65°C)		
FINISH	EPOXY POLYAMIDE PAINT		
WEIGHT	155 LBS (70 KG)		

### NOTES:

- DO NOT USE LEAD BASE PAINT TO TOUCH-UP OR REPAINT ANTENNA.



P.O. BOX 603 GUELPH, ONTARIO, CANADA, N1H 6L3

TEL 519-824-3220 FAX 519-824-3411

INTERNET: www.valcom-guelph.com EMAIL: enquiries@valcom-guelph.com