



SPECIALISTS FOR HIGH FREQUENCY

VAS-1011 HF Antenna

NSN 5985-00-846-6442

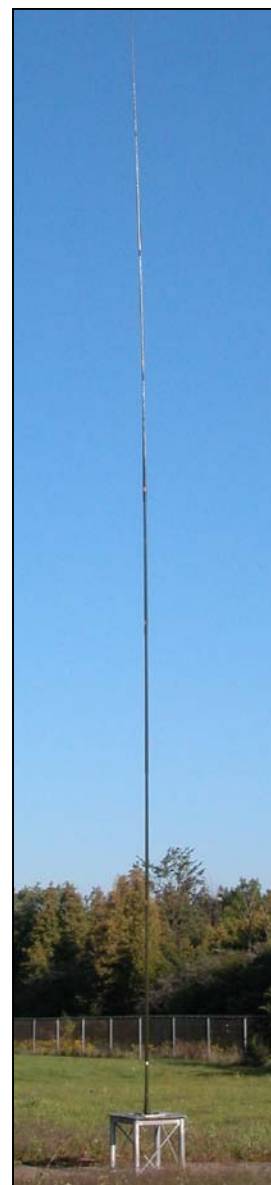
THE VALCOM MODEL VAS-1011 ANTENNA IS A LIGHTWEIGHT, EIGHT-SECTION FIBREGLASS WHIP ANTENNA FOR STATIONARY OR MOBILE APPLICATIONS. EACH SECTION IS FOUR FEET IN LENGTH AND UTILIZES ROLLED THREADED FERRULES TO PROVIDE POSITIVE ELECTRICAL CONTACT WITH MAXIMUM MECHANICAL STRENGTH BETWEEN THE SECTIONS. THE VAS-1011 CAN BE USED AS A 16 FOOT WHIP FOR VEHICULAR MOBILE APPLICATIONS BY ASSEMBLING THE TOP FOUR SECTIONS ONLY, WHILE ASSEMBLING ALL EIGHT SECTIONS PROVIDES A 34 FOOT WHIP FOR STATIONARY APPLICATIONS.

THE VAS-1011 IS EASILY ASSEMBLED AND ERECTED IN MINUTES BY A SINGLE PERSON USING ONLY HAND TIGHTENING. TO REDUCE THE RISK OF RF BURN IN THE EVENT OF CASUAL PERSONNEL CONTACT, THERE ARE NO EXPOSED METAL PARTS WHEN THE ANTENNA IS ASSEMBLED. THE STANDARD MOUNTING BASE INCLUDES A TERMINATION BAND WITH A TERMINAL LUG AS THE INPUT CONNECTION TO THE ANTENNA SYSTEM.

OTHER MOUNTING OPTIONS ARE AVAILABLE SEPARATELY FOR THE VARIOUS APPLICATIONS THIS ANTENNA CAN BE USED FOR, INCLUDING A WHIP TILT ADAPTOR FOR NVIS OPERATION. RAIN, SALT WATER OR DIRT ACCUMULATION WILL NOT DEGRADE THE EXCEPTIONAL STRENGTH OR THE ELECTRICAL PERFORMANCE OF THIS ANTENNA. DURING TRANSPORT OR WHEN NOT IN USE, THE VAS-1011 CAN BE STOWED IN A RUGGED CANVAS CARRYING CASE, AVAILABLE SEPARATELY.

FEATURES:

- 8 SECTIONS, 34 FEET HIGH, 20 LBS
- STATIONARY/MOBILE APPLICATIONS
- EXCEPTIONALLY STRONG
- LIGHT WEIGHT
- SINGLE PERSON ASSEMBLY AND ERECTION



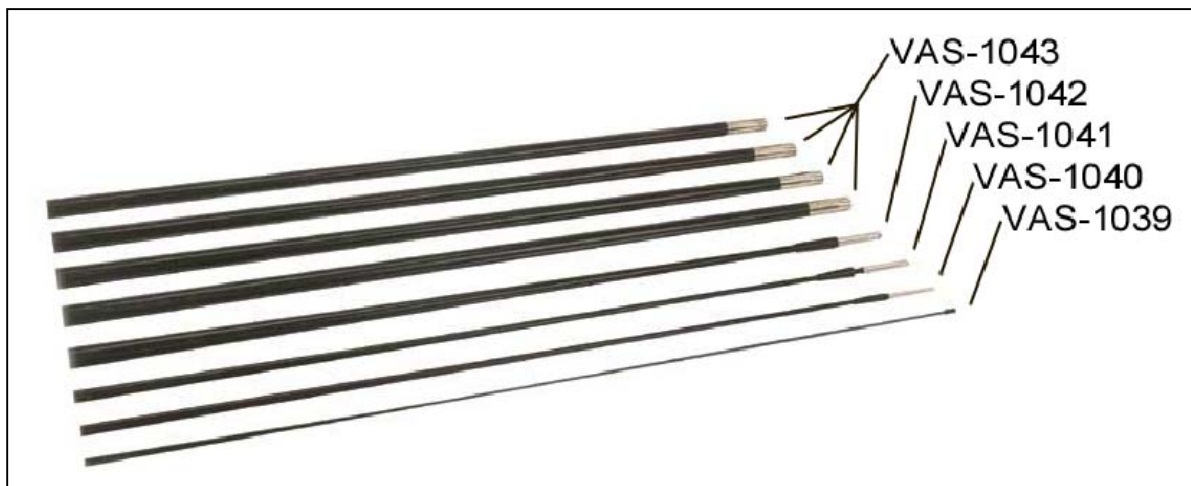
VAS-1011 QUICK REFERENCE DATA

ELECTRICAL

FREQUENCY	2 MHz TO 30 MHz
POLARIZATION	VERTICAL
RADIATION PATTERN	OMNIDIRECTIONAL (AZIMUTH PLANE)
IMPEDANCE	50 OHMS (NOMINAL) (DEPENDS ON TUNER CAPACITY)
POWER HANDLING	1 kW CONTINUOUS AVERAGE POWER
INPUT CONNECTOR	TERMINAL LUG

MECHANICAL/ENVIRONMENTAL

ASSEMBLED HEIGHT	33.75 FT (10.3 M)
SECTION LENGTHS	4.3 FT (1.3 M)
TOP TERMINATION	RUBBER TIP
JOINTS	ROLLED THREADS, NICKEL PLATED BRASS
ASSEMBLED WEIGHT	19 LBS (8.8 KG)
SECTION WEIGHTS	VAS-1039 : 0.26 LBS (0.12 KG) VAS-1040 : 0.44 LBS (0.20 KG) VAS-1041 : 0.54 LBS (0.25 KG) VAS-1042 : 1.12 LBS (0.51 KG) VAS-1043 : 1.48 LBS (0.67 KG)
CONSTRUCTION	8 FIBREGLASS SINGLE ELEMENT SECTIONS WITH CAST ALUMINUM MOUNTING BASE
MOUNTING HOLE PATTERN	6 HOLES 0.406 IN (10.3 MM) DIA, EQUALLY SPACED ON A 7.75 IN (197 MM) DIA BOLT CIRCLE
FINISH COLOUR	GREEN (FED STD 595)
TEMPERATURE	-40°F TO +122°F (-40°C TO +50°C)
ICE LOADING	0.5 IN (13 MM) RADIAL ICE



(SECTIONS ARE AVAILABLE SEPARATELY USING THE PART NUMBERS SHOWN ABOVE)



P.O. BOX 603 GUELPH, ONTARIO, CANADA, N1H 6L3
TEL 519-824-3220 FAX 519-824-3411
INTERNET: www.valcom-guelph.com EMAIL: enquiries@valcom-guelph.com