

World's Leading Manufacturer Of Fibreglass Whip Antennas



SPECIALISTS FOR ULTRA HIGH FREQUENCY

Dual Channel UHF Dipole Antenna AS-4163/URC

NSN 5985-01-338-9509

THE AS-4163/URC DUAL CHANNEL, UHF ANTENNA IS A RUGGED, SELF-SUPPORTING, VERTICALLY POLARIZED, BROADBAND ANTENNA COVERING THE FREQUENCY RANGE OF 225 MHz TO 400 MHz. THIS LIGHT WEIGHT ANTENNA CAN BE USED IN EITHER THE TRANSMIT MODE OR THE RECEIVE MODE.

THE ANTENNA IS DESIGNED FOR USE UNDER THE SEVERE ENVIRONMENTAL CONDITIONS ENCOUNTERED IN A SHIPBOARD ENVIRONMENT.

THE TWO INDEPENDANT RADIATING ELEMENTS ARE HOUSED IN A SINGLE FIBREGLASS RADOME WITH AN INTEGRAL FIBREGLASS MOUNTING BASE. A FEED-THROUGH CABLE RUNNING FROM THE BASE TO THE TOP ALUMINUM FLANGE ALLOWS FOR THE MOUNTING OF ANOTHER ANTENNA, SUCH AS THE AS-390/SRC, ATOP THE AS-4163/URC.

THE TWO ANTENNA CHANNELS ARE HIGH POWER, BALANCED DIPOLES. EACH DIPOLE IS CAPABLE OF HANDLING POWER LEVELS OF UP TO 1 KW AVERAGE. THE ISOLATION BETWEEN THE TWO CHANNELS IS GREATER THAN 25 dB. EACH CHANNEL EXHIBITS A NOMINAL INPUT IMPEDANCE OF 50 OHMS AND A VSWR OF 3.0:1 MAXIMUM AND 2.5:1 AVERAGE OVER THE ENTIRE FREQUENCY RANGE OF 225 MHz TO 400 MHz.

THE ANTENNA HAS BEEN DESIGNED TO MEET THE VIBRATION REQUIREMENTS OF MIL-STD-167, TYPE I AND II, THE SHOCK REQUIREMENTS OF MIL-S-901 AND THE ENVIRONMENTAL REQUIREMENTS OF MIL-E-16400H.

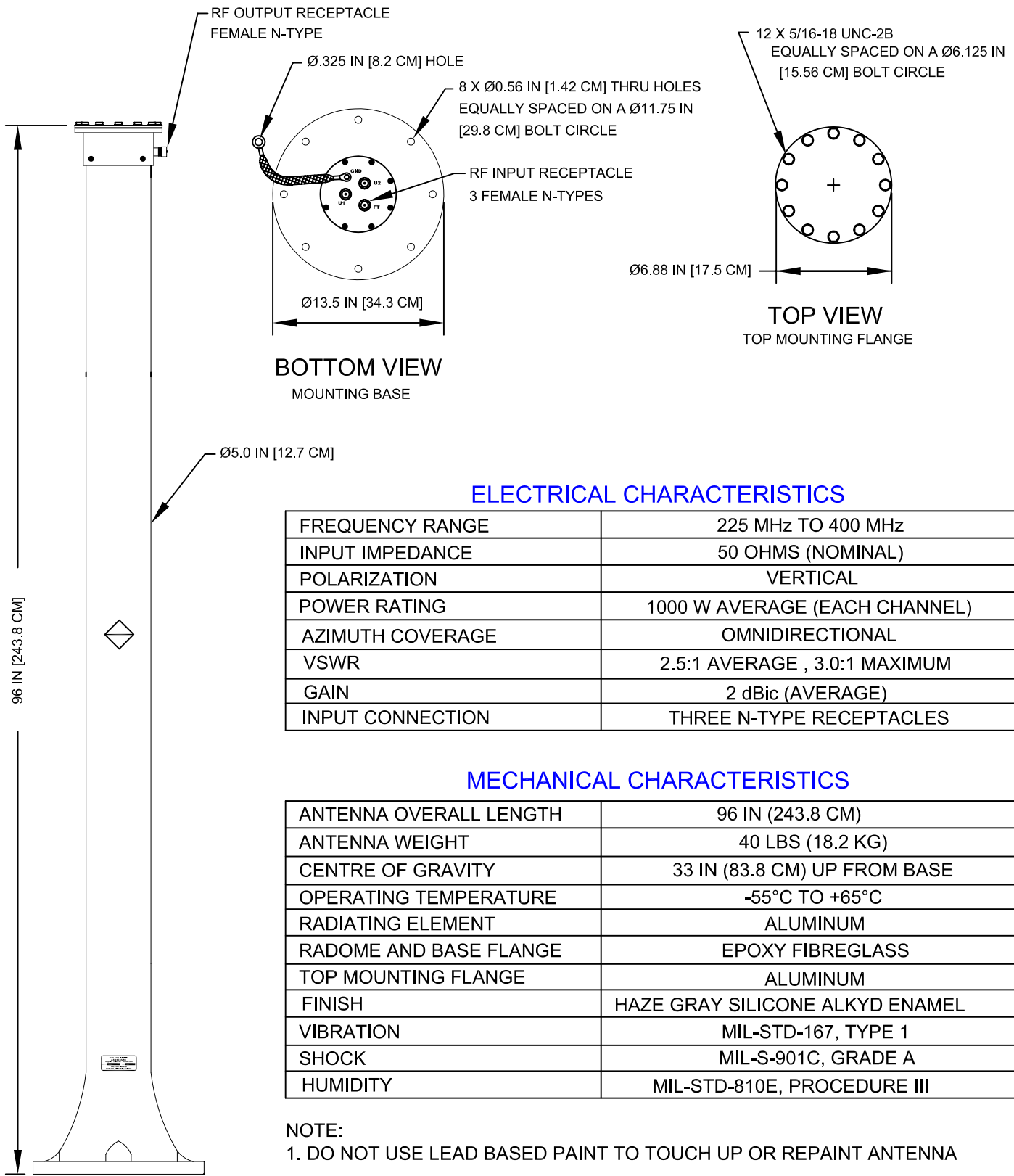
FEATURES:

- BROADBAND
- LIGHTWEIGHT
- SHIPBOARD APPLICATIONS
- RECEIVING OR TRANSMITTING MODE
- WEATHERPROOF



AS-4163/URC

QUICK REFERENCE DATA



ELECTRICAL CHARACTERISTICS

FREQUENCY RANGE	225 MHz TO 400 MHz
INPUT IMPEDANCE	50 OHMS (NOMINAL)
POLARIZATION	VERTICAL
POWER RATING	1000 W AVERAGE (EACH CHANNEL)
AZIMUTH COVERAGE	OMNIDIRECTIONAL
VSWR	2.5:1 AVERAGE , 3.0:1 MAXIMUM
GAIN	2 dBic (AVERAGE)
INPUT CONNECTION	THREE N-TYPE RECEPTACLES

MECHANICAL CHARACTERISTICS

ANTENNA OVERALL LENGTH	96 IN (243.8 CM)
ANTENNA WEIGHT	40 LBS (18.2 KG)
CENTRE OF GRAVITY	33 IN (83.8 CM) UP FROM BASE
OPERATING TEMPERATURE	-55°C TO +65°C
RADIATING ELEMENT	ALUMINUM
RADOME AND BASE FLANGE	EPOXY FIBREGLASS
TOP MOUNTING FLANGE	ALUMINUM
FINISH	HAZE GRAY SILICONE ALKYD ENAMEL
VIBRATION	MIL-STD-167, TYPE 1
SHOCK	MIL-S-901C, GRADE A
HUMIDITY	MIL-STD-810E, PROCEDURE III

NOTE:

1. DO NOT USE LEAD BASED PAINT TO TOUCH UP OR REPAINT ANTENNA

