

World's Leading Manufacturer Of Fibreglass Whip Antennas



SPECIALISTS FOR MEDIUM FREQUENCY

---

## **49 ft Fibreglass Antenna V-147-CL2-TH**

---

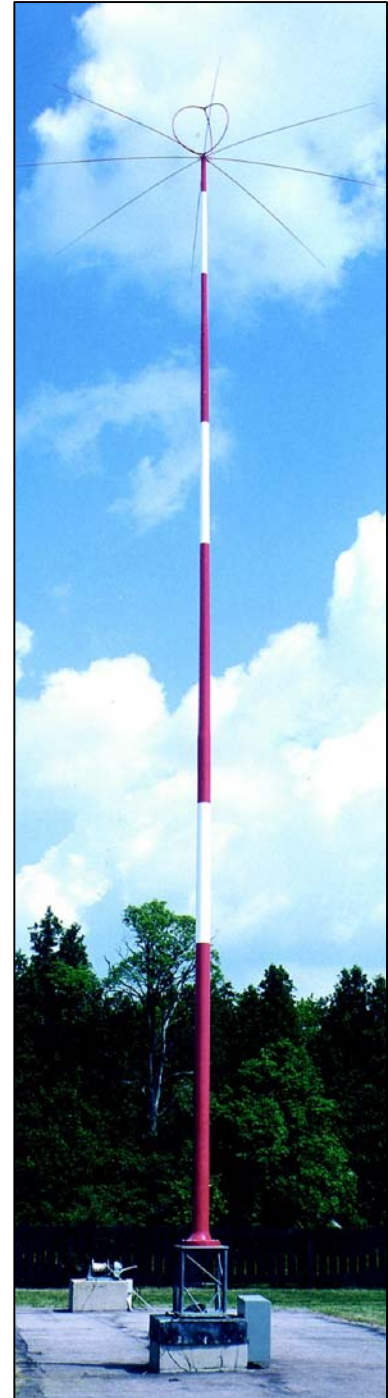
THE VALCOM MODEL V-147-CL2-TH IS A HEAVY DUTY, FIELD PROVEN, HIGH RELIABILITY, COIL-LOADED 49 FOOT WHIP ANTENNA. AN OPTIONAL "TOP-HAT" IS RECOMMENDED TO ENHANCE THE BANDWIDTH. THE 8 SMALL WHIPS MAKING UP THE TOP-HAT PROVIDE CAPACITIVE LOADING TO MAKE THIS ANTENNA PARTICULARLY WELL SUITED FOR USE WITH TRAVELLER INFORMATION SERVICE (TIS) SYSTEMS OPERATING IN THE AM FREQUENCY BAND. VALCOM ANTENNAS ARE IN USE ON MARITIME MARKER BUOYS, OFF-SHORE DRILLING RIGS, SHIPS AND HF COMMUNICATION SYSTEMS.

THE PEDESTAL BASE MOUNTS THE ANTENNA TO ITS FOUNDATION. THE BASE IS MADE OF A CONTINUATION OF THE SAME HIGH STRENGTH FILAMENT FIBREGLASS USED IN THE ANTENNA. THE RESULT IS AN INTEGRAL BASE INSULATOR WITH EXCEPTIONAL ELECTRICAL AND MECHANICAL PROPERTIES. POWER HANDLING CAPABILITIES ARE IMPROVED WHILE ELIMINATING THE WEIGHT OF CONVENTIONAL BRASS AND PORCELAIN INSULATORS. THE SHAPE TRANSMITS THE BENDING MOMENT EVENLY TO THE BASE MOUNTING BOLTS.

A HEAVY DUTY GALVANIZED TOWER (VTGS-20) IS AVAILABLE IN TWO FOOT INCREMENTS UP TO EIGHT FEET. THESE TOWERS ARE USED TO CLEAR OBSTRUCTIONS AND THE SNOW LINE.

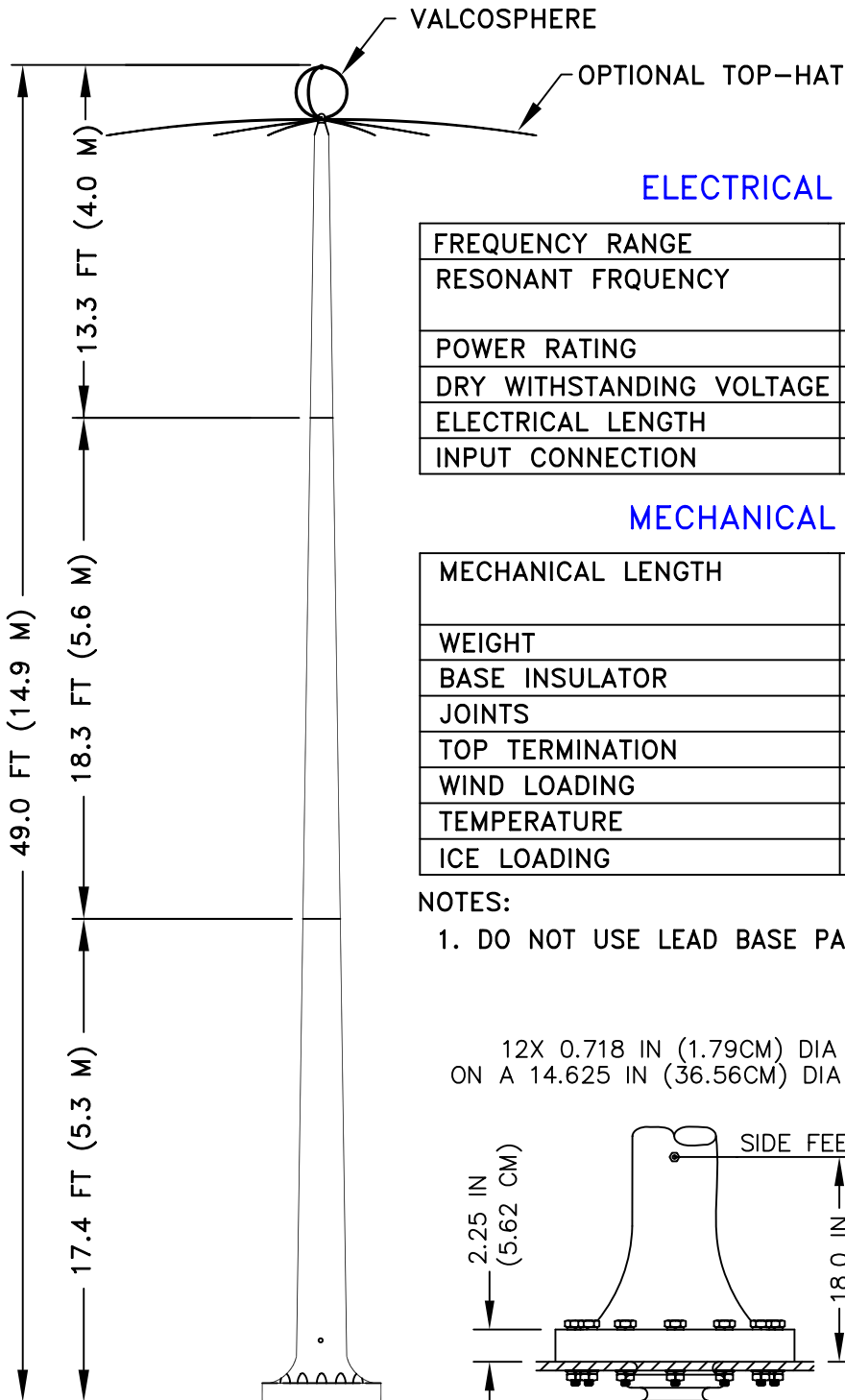
**FEATURES:**

- COIL LOADED
- HIGH EFFICIENCY
- LOW COST INSTALLATION AND MAINTENANCE
- HIGH STRENGTH FIBREGLASS BASE
- SELF-SUPPORTING ANTENNA



# QUICK REFERENCE DATA

## V-147-CL2-TH



### ELECTRICAL CHARACTERISTICS

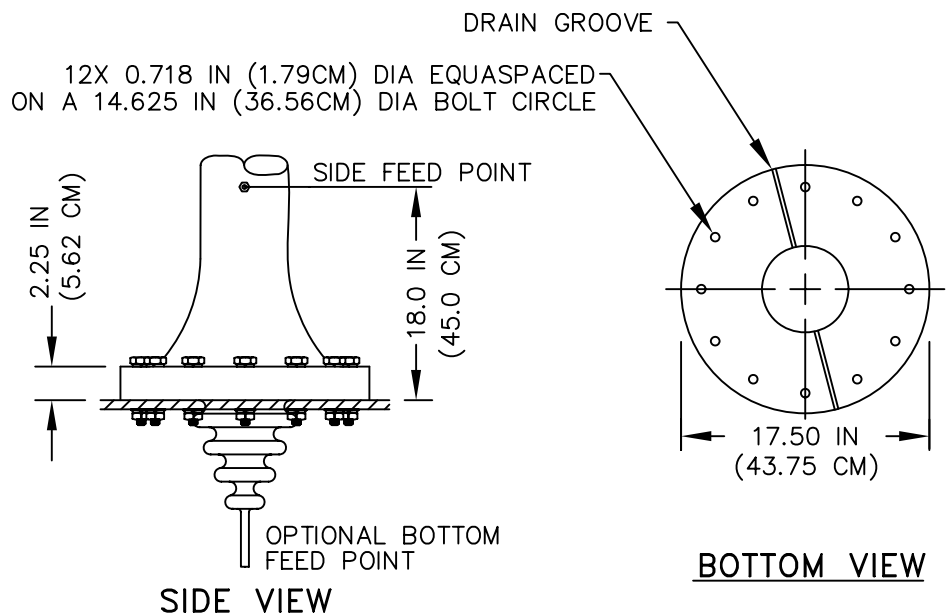
FREQUENCY RANGE	100 KHZ TO 30 MHZ- WITH TUNER
RESONANT FRQUENCY	100 KHZ TO 4.5 MHZ (AS SPECIFIED BY CUSTOMER)
POWER RATING	1.0 KW AVERAGE 4.0 KW PEP
DRY WITHSTANDING VOLTAGE	25 KV
ELECTRICAL LENGTH	VARIABLES WITH LOADING SECTION
INPUT CONNECTION	3/8-24 BOLT (SIDE OR BOTTOM)

### MECHANICAL CHARACTERISITICS

MECHANICAL LENGTH	49 FT (14.9 M) TYPICAL (OTHER HEIGHTS AVAILABLE UPON REQUEST)
WEIGHT	400 LBS (181.4 KG)
BASE INSULATOR	EPOXY FIBREGLASS
JOINTS	BRONZE THREADS WITH LOCKING PINS
TOP TERMINATION	VALCOSPHERE AND TOP-HAT
WIND LOADING	180 MPH (288 KM/HR)
TEMPERATURE	-60°F to 150°F (-50°C to 65°C)
ICE LOADING	0.75 IN (1.9 CM) ICE AT 100 MPH (160 KM/H)

#### NOTES:

- DO NOT USE LEAD BASE PAINT TO TOUCH-UP OR REPAINT ANTENNA



P.O. BOX 603 GUELPH, ONTARIO, CANADA, N1H 6L3  
 TEL 519-824-3220 FAX 519-824-3411

INTERNET: [www.valcom-guelph.com](http://www.valcom-guelph.com) EMAIL: [enquiries@valcom-guelph.com](mailto:enquiries@valcom-guelph.com)